

Documentation Errata

This document contains corrections to the *SVRS 2.0 User's Manual*. The affected pages are listed below, along with the complete corrected text and/or graphics. You may want to insert this sheet into your manual for future reference.

Note that the latest versions of all Software VRS documentation are available in PDF format from the Kofax web site. To access the PDF files, point your browser to www.kofax.com and go to the Support page for VirtualReScan. Then, click the link for "Online Manuals." The complete path is listed below:

<http://www.kofax.com/support/virtualrescan/software/manuals.asp>

In addition, the original document files are available from the IP Resource CD dated June 2002.

- | <i>Page</i> | <i>Read</i> |
|-------------|--|
| 2, 93 | On the Table of Contents and on page 93, Appendix E is incorrectly listed as Appendix F. It should read:

Appendix E: Kofax Technical Support |
| 27 | Step 2 of this procedure instructs the user to shut down the computer. It should read instead:

2 Reboot your computer. |
| 43 | In Figure 49, the Kofax Software VRS source does not designate whether it is an ISIS or TWAIN source. In this instance, the ISIS source should be listed. Below is the screen shot of the source as it should have appeared: |

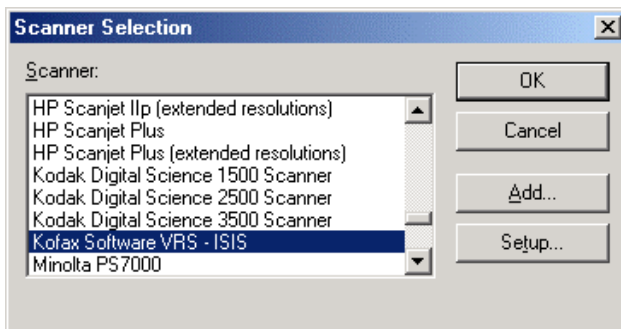


Figure 49. Select the Scan Source in Pix View.

- | | |
|----|---|
| 86 | The Fujitsu <i>fi-4110</i> was incorrectly listed as a Black Border scanner. It creates a White Border, not a Black Border. |
|----|---|