



# VirtualReScan® 3.5 Quick Reference

10300410-000  
Revision A

## **Copyright**

Copyright © 2004 Kofax Image Products. All Rights Reserved.  
Printed in the U.S.A.

The information contained in this document is the property of Kofax Image Products. Neither receipt nor possession hereof confers or transfers any right to reproduce or disclose any part of the contents hereof, without the prior written consent of Kofax Image Products. No patent liability is assumed, however, with respect to the use of the information contained herein.

## **Trademarks**

VirtualReScan, Kofax, ImageControls, and Adrenaline are registered trademarks of Kofax Image Products.

ISIS is a registered trademark of Pixel Translations, a division of Captiva Software Corporation.

TWAIN is a registered trademark of the TWAIN Working Group.

All other product names and logos mentioned herein are the property of their respective companies.

## **Disclaimer**

The instructions and descriptions contained in this document were accurate at the time of printing. However, succeeding products and documents are subject to change without notice. Therefore, Kofax Image Products assumes no liability for damages incurred directly or indirectly from errors, omissions, or discrepancies between the product and this document.

An attempt has been made to state all allowable values where applicable throughout this document. Any values or parameters used beyond those stated might have unpredictable results.





## Start...

---

Once you install VRS, follow these steps to start VRS.

- 1 Turn on your scanner, then switch on your PC.
- 2 Launch your scan application.
- 3 Go to select a scan source. This will vary depending on your scan application. From Scan Demo, for example, you would go to Scanner | Select Scan Source. For other applications, the Source may be referred to as “Scanner” or “Device.”
- 4 Select the appropriate scan source from the list provided. Depending on your scanner and scan application, the choice of sources created at the time of installation will vary. Some options may be
  - <Your Scanner Model> with VRS (ImageControls)
  - Kofax VRS Scanner (ISIS)
  - Kofax VRS - TWAIN (TWAIN)
- 5 Click OK. For ImageControls-based applications, the VRS icon appears in the Windows taskbar. It will appear once you start to scan if you are using an ISIS- or a TWAIN-based application.

---

## ...then scan!

That's all you need for great scans. At install, VRS settings are optimized for your scanner, making it possible to scan documents with a variety of background colors, text quality, and paper sizes with exceptional results. Plus, you can still adjust VRS for those particularly difficult documents that no other scanner is able to tackle. To learn about manually adjusting images with VRS, read on...





## Zoom in on Specific Areas...

Use the Zoom menu to magnify or reduce the image in the Viewer.

- 1 Click and drag the selection tool (cursor) around a zone to enlarge it.  
-or-
- 1 Click on the Zoom menu.
- 2 Select the zoom level from the Zoom menu as shown below.  
(Select Fit Window to see the entire image again.)

*Using the Cursor to Zoom  
on the Viewer*

The screenshot displays the VirtualReScan Viewer interface. The main window shows a technical drawing of a rectangular component with dimensions: 10, 2.0, 10, 10, and 3.0. A zoomed-in inset of this drawing is shown in the top right. The Zoom menu is open, showing options: 25%, 50%, 75% (selected), 100% - Actual, 200%, and Fit Window. The interface also includes a 'CONTEMP CAR' logo, contact information (16245 Laguna Canyon, (949) 727-1733), and a name field containing 'Greg Lamont'. Other UI elements include 'Clarity', 'Noise', 'Auto Brightness', and a 'Brightness' slider set to 47.

VirtualReScan Viewer

Zoom

- 25 %
- 50 %
- 75 %
- 100 % - Actual
- 200 %
- Fit Window

VirtualReScan Viewer

Zoom

- 25 %
- 50 %
- 75 %
- 100 % - Actual
- 200 %
- Fit Window

24-1346

-426-1138

NAME *Greg Lamont*

CONTEMP CAR

16245 Laguna Canyon  
(949) 727-1733 •

VirtualReScan

Clarity | Noise

Auto Brightness

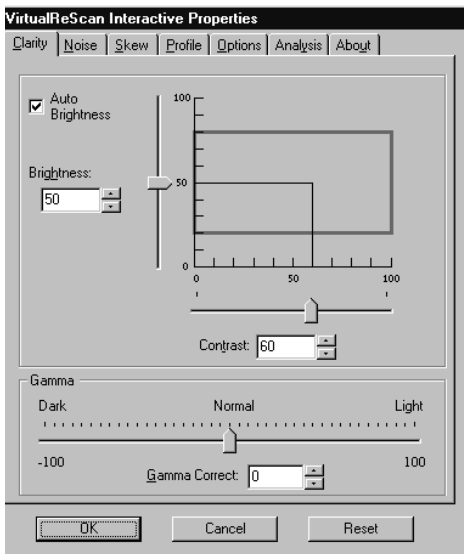
Brightness: 47

**VRS Viewer With Zoom Set to 75%**



## Use the Interactive Properties Dialog Box...

Each tab on the Interactive Properties dialog box controls a different aspect of an image. Make changes to one or all the tabs and click OK to accept changes. Click Cancel to exit with no changes. Reset undoes any changes and returns settings to their original values.



### Clarity

Move the Brightness (vertical) slider up to erase the background and reveal text. Move the Contrast (horizontal) slider right to enhance text and lines. A Gamma Correct box are also available.

### Noise

Thin/thicken characters or remove speckling.

### Skew

Straighten images in the Viewer, enable Automatic Deskew, Auto Crop, or Edge Cleanup.

### Profile

Create and manage Profiles (saved settings from the Clarity, Noise, and Skew tabs).



## ...To Modify or Display Image Information

---



### Options

Activate optional features specific to your scanner.

### Analysis

View property settings for the most recently scanned image.

### About

Get information on VRS and Kofax Image Products. Link to the Kofax Web site at [www.kofax.com](http://www.kofax.com) to find product information and VRS product update downloads.

## ...Then Adjust or Accept the Image in the Viewer

---

Once you've made changes to the image, click OK. The property settings are saved and put into effect for the next batch of scanned documents. You can always save the settings to use again by creating a profile.



## Create a Profile for Difficult Documents

A profile “packages” and lets you assign a name to settings you make on certain tabs of the Interactive Properties dialog box. To create a profile:

- 1 Open the VirtualReScan Interactive Properties dialog box.
- 2 Make changes to the Clarity, Noise, or Skew tabs.
- 3 Select the Profile tab.
- 4 Under New Profile, type the profile name (alphanumeric characters).
- 5 Select Save As. The new profile becomes the active profile.
- 6 Click OK to close the dialog box.

### Default Profile

Avoid updating or deleting (Remove button) the default VRS profile, called Default settings, since it can only be restored by reinstalling the software or by using the Restore Default Values Utility.

### Active Profile

Select a profile and click Load to set the new active (current) profile.

### Update a Profile

To update a profile, select it, make changes, then click Save.



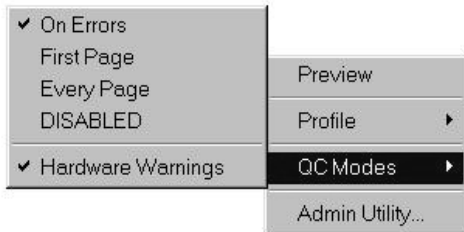


## Set the QC Mode...

The QC Mode determines when you want the VRS user interface (UI) to open for image quality inspection and interactive updates. After installation, the mode is set to On Errors, but you can easily change it.

Once selected, a QC mode setting stays in effect until changed, even across scanning sessions. The currently selected QC Mode is indicated with a check mark.

- 1 From the Windows taskbar, right click on the VRS icon.
- 2 From the VRS menu, select QC Mode.
- 3 Select a QC mode from the menu.



**QC Modes Menu**

---

### On Errors

VRS UI opens only when exception conditions occur during scanning. This is the default setting after installation.

---

### First Page

VRS UI opens when you scan the first page of a batch and when exception conditions occur.

---

### Every Page

VRS UI opens after each document or after each side of a duplex document scans.

---

### Disabled

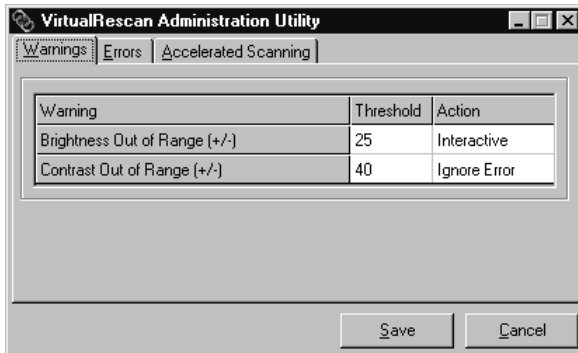
VRS dialogs remain out of view, even if exception conditions occur.



## ...and Go to the Administration Utility

---

The VRS Administration Utility dialog box consists of three tabs: Warnings, Errors, and Accelerated Scanning.



### **Warnings**

---

Adjust settings for image quality issues.

### **Errors**

---

Adjust settings for equipment conflicts and paper transport issues.

### **Accelerated Scanning**

---

Adjust the slider to increase the speed of your scanner.



## ...to Adjust the Tab Settings

---

Use these instructions to modify the VRS Administration Utility tabs.

- 1 Right-click on the VRS icon in the Windows taskbar.
- 2 From the VRS menu, select Admin Utility.
- 3 Select and adjust the settings for the following tabs:
  - Warnings tab-Threshold. Type directly into the Threshold text box, or click the arrows to select a new threshold setting.
  - Warnings tab/Errors tab-Action. Define a VRS response to each exception type by clicking in the Action option and selecting from the list.
  - Accelerated Scanning tab. Click and drag the slider to make your selection.
- 4 Once you are satisfied with the settings, click Save. Changes that you have made on any of the tabs are saved until changed and will take effect at the start of the next scan operation. When this dialog is dismissed via the Cancel button, changes made on any of the tabs are automatically discarded without further notice.

## And You Can Always Get Help By...

---

VRS is equipped with context-sensitive help. Press F1 for tab-specific information to help you complete crucial tasks, without leaving the application.

